

CAMERA SYSTEMS 2021/22

Agricultural



**For tugs
and harvest
machinery**



All products can
also be found on the net
www.roscho.de

 **ROSCHO**
Automotive Solutions

Professional line
Quad systems
Front systems

5" & 7" & 10" Monitors

- Bracket cameras
- Side cameras
- Mini cameras

Accessories
Spiral cable set
Manufacturer-specific adapter



04

Camera systems

06

Quad systems



07

Front systems



08

Monitors



ROSHO product solutions

Whether agricultural, construction, transport vehicles or buses: ROSHO offers camera, video and multimedia solutions that are perfectly tailored to the various application scenarios in the vehicle. We cover all leading manufacturers with their common vehicle types.

The vehicles used by you or offered by us are not included? No problem!

We also find excellent solutions for less common brands, vehicle types or scenarios. In case of doubt at your location. This is our promise.

We want it to be as easy as possible for you to equip your vehicles with powerful, innovative camera technology. To protect health and property, for the benefit of you and your customers.

You have the challenge.
We have the solution. ROSHO



10

Cameras

14

Cables & adapters



18

Manufacturer-specific Adapter



04

CAMERA SYSTEMS

Free view on all sides



**Critical
workflows
can be checked
with ROSHO
systems more
efficient**





Camerasystem RS 50-3

SCM-1-001-53

5-Inch-LCD-Monitor LCM 503T. Camera RK 1405M and 20 Meters Camera cable

Camera: protection class IP 69K // Point of view 130°
Monitor: 3 × Camera input

Camerasystem RS 73-4

SCM-1-001-44

7-Inch-LCD-Monitor LCM 703T. Camera RK 1405M and 20 meters camera cable

Camera: protection class IP 69K // Point of view 130°/150°
Monitor: 3 × camera input



Camerasystem RS 73-14

SCM-1-001-42

7-Inch-LCD-Monitor LCM 703T. 2 × Camera RK 1405M and 2 × 20 meters camera cable

Camera: protection class IP 69K // Point of view 130°/150°
Monitor: 3 × camera input

Camerasystem RS 73-15

SCM-1-001-45

7-Inch-LCD-Monitor LCM 703T. 2 × Camera RK 1405M. 1 × Camera RK 1415M. 2 × 20 meters and 1 × 15 meters camera cable

Camera: protection class IP 69K // Point of view 130°/150°
Monitor: 3 × camera input

Camerasystem RS 100-2

SCM-1-001-66

10-Inch-LCD-Monitor LCM 1003T. Camera RK 1405M and 20 meters camera cable

Camera: protection class IP 69K // Point of view 130°/150°
Monitor: 3 × camera input



Monitor extension cable for LCM 503T / 703T / 703QHD

MW-2-030-02

Cable harness extension 3 m



Camera systems Quad systems



Camerasystem RS 70-2

SCM-1-001-52

7-Inch-LCD-Quad-Monitor LCM 703QHD.
Camera RK 1405M and 20 meters camera cable

Camerasystem RS 70-14

SCM-1-001-43

7-Inch-LCD-Quad-Monitor LCM 703QHD.
2 × Camera RK 1405M and 2 × 20 meters camera cable

Camera: protection class IP 69K // Point of view 130°
Monitor: 4 × camera input



Camerasystem RS 100-11

SCM-1-001-101

10-Inch-LCD-Quad-Monitor LCM 1003QHD.
Camera RK 1405M and 20 meters camera cable

Camerasystem RS 100-10

SCM-1-001-100

10-Inch-LCD-Quad-Monitor LCM 1003QHD.
2 × Camera RK 1405M and 2 × 20 meters camera cable

Camera: protection class IP 69K // Point of view 130°
Monitor: 4 × camera input

Camera systems 07

Front systems



Camerasystem FS 70-11

SCM-1-001-46

7-Inch-LCD-Monitor LCM 703QHD. 2 × Camera RK 1404M and 2 × 10 meters camera cable

Camera: protection class IP 69K // Point of view 78°
Monitor: 4 × camera input



Camerasystem Front Pro FS 70-12

SCM-1-001-47

7-Inch-LCD-Monitor LCM 703QHD. 2 × Camera RK 1404M. ABS Direct connection VAR II - 2 × 1.5 m. ABS Tractor VAR II - 2 × 1.5 m. 2 × 5 m camera cable and 2 × 5 m extension cable

Camera: protection class IP 69K // Point of view 78°
Monitor: 4 × camera input



MONITORS

High resolution 5-. 7-. 10-Inch



Monitor LCM 503T

MM-3-050-02

5" Monitor // 3 × Camera input // Protection class IP 68

Technical specifications

Resolution	640 × 480
Brightness	250 cd/m ²
Operating voltage	10 - 32V
Temperature range	-20 °C ~ +70 °C
Connections	3 × MiniDIN
Dimensions (B × H × T)	105 × 152 × 23 mm



Monitor LCM 702HD

MM-2-070-03

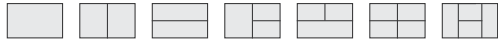
7" Monitor // 2 × Camera input

Technical specifications

Resolution	800 × 400
Brightness	300 cd/m ²
Operating voltage	12 - 32V
Temperature range	-30 °C ~ +80 °C
Connections	2 × MiniDIN
Dimensions (BxHxT)	182 × 127 × 25 mm



Possible representations



Monitor LCM 703QHD

MM-4-070-01

7" Monitor // 4 × Camera input // Protection class IP 64

Technical specifications

Resolution	800 × 480
Brightness	450 cd/m ²
Operating voltage	10 - 32V
Temperature range	-20 °C ~ +70 °C
Connections	4 × MiniDIN
Dimensions (B × H × T)	181 × 122 × 24 mm



Monitor LCM 703T

MM-3-070-01

7" Monitor // 3 × Camera input // Protection class IP 64

Technical specifications

Resolution	800 × 480
Brightness	450 cd/m ²
Operating voltage	10 - 32V
Temperature range	-20 °C ~ +70 °C
Connections	3 × MiniDIN
Dimensions (B × H × T)	181 × 122 × 24 mm

Monitor LCM 1003T

MM-3-100-01

10" Monitor // 3 × Camera input // Protection class IP 64

Technical specifications

Resolution	1280 × 800
Brightness	450 cd/m ²
Operating voltage	12 - 24VDC
Temperature range	-20 °C ~ +75 °C
Connections	3 × MiniDIN
Dimensions (B × H × T)	252 × 172.5 × 29.5 mm



Monitor LCM 1003QHD

MM-4-100-01

10" Monitor // 4 × Camera input // Protection class IP 64

Technical specifications

Resolution	1280 × 800
Brightness	450 cd/m ²
Operating voltage	12 - 24VDC
Temperature range	-20 °C ~ +75 °C
Connections	4 × MiniDIN
Dimensions (B × H × T)	252 × 172.5 × 29.5 mm



Possible representations



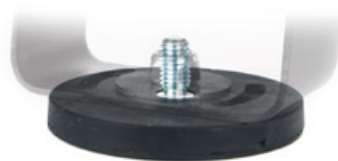
Cameras

Bracket Cameras



Magnetic base for RK 14xx Series

Without camera
ZA-1-002-09



Camera RK 14xx Series

Camera RK 1404M (78°)	CM-1-070-06
Camera RK 1405M (130°)	CM-1-130-10
Camera RK 1415M (150°)	CM-1-150-05

12 and 24V Reversing camera with window heating for use on agricultural machinery and commercial vehicles. Point of view in 78°, 130° and 150° diagonal. Extreme robust (highest protection class IP 69K). Dust-, dirt-, rain- and frost-resistant.

78° / 130° / 150° Point of view // Protection class IP 69K

Technical specifications

Resolution	960 × 480
Sensitivity	0 Lux (8 IR LED)
Lens / angle	78° / 130° / 150°
Operating voltage	12 - 24V DC
Temperature range	-30 °C ~ +70 °C
Casing	Aluminium
Protection class	IP 69K
Dimensions (B × H × T)	76 × 70 × 42 mm
Connections	MiniDIN screwable

Camera RK 1306M

CM-2-130-11

Small 12 and 24V Camera for hard-to-reach areas on the outside of the vehicle. Extremely robust construction (highest protection class IP 69K). Can be placed almost anywhere.

130° Point of view // Protection class IP 69K

Technical specifications

Resolution	960 × 480
Sensitivity	0 Lux (5 IR LED)
Lens / angle	130°
Operating voltage	12 - 24V DC
Temperature range	-30 °C ~ +70 °C
Casing	Aluminium
Protection class	IP 69K
Dimensions (B × H × T)	41 × 29 × 45.5 mm
Connections	MiniDIN screwable



12 Cameras

BallCameras



RK 1002M



RK 1004M

Camera RK 1002M / 1004M

Camera RK 1002M (110°)

CM-1-110-01

Camera RK 1004M (110°)

CM-1-110-04

Ball camera with extremely robust casing (highest protection class IP 69K). For hard-to-reach areas on the outside of the vehicle. Can be aligned on all sides.

110° Point of view // Protection class IP 69K

Technical specifications

Resolution	500 × 582
Sensitivity	0 Lux (8 IR LED)
Lens / angle	2.6 mm / 110°
Operating voltage	12V DC +/- 10%
Temperature range	-30 °C ~ +70 °C
Casing	Aluminium/plastic
Protection class	IP 69K
Dimensions (B × H × T)	
RK 1002M	63 × 76.5 × 50.5 mm
RK 1004M	84 × 97 × 79.2 mm
Connections	MiniDIN screwable



Camera RK 1001M

CM-1-150-09

Ball camera with extremely robust casing. For hard-to-reach areas on the outside of the vehicle. Can be aligned on all sides.

150° Point of view // Protection class IP 68

Technical specifications

Resolution	500 × 582
Sensitivity	0 Lux (8 IR LED)
Lens / angle	150°
Operating voltage	12 V DC
Temperature range	-30 °C ~ +70 °C
Casing	Plastic
Protection class	IP 68
Dimensions (B × H × T)	97 × 85 × 79 mm
Connections	MiniDIN screwable



Camera RK 1304M

CM-1-185-01

Extremely robust construction. Can be placed almost anywhere.

180° Point of view // Protection class IP 69K

Technical specifications

Resolution	1280 × 960
Sensitivity	0.02 Lux (F1.4)
Lens / angle	180° diagonal
Operating voltage	12 - 24V DC
Temperature range	-30 °C ~ +85 °C
Casing	Aluminium
Protection class	IP 69K
Dimensions (B × H × T)	23 × 23 × 25 mm
Connections	MiniDIN screwable



Camera RK 1902M

CM-1-160-01

License plate holder with integrated 160° Camera.

160° Point of view // Protection class IP 68

Technical specifications

Resolution	512 × 582
Sensitivity	0.1 Lux
Lens / angle	160°
Operating voltage	12V DC +/- 10%
Temperature range	-30 °C ~ +60 °C
Casing	Plastic
Protection class	IP 68
Dimensions (B × H × T)	526 × 147 × 28 mm
Connections	MiniDIN pluggable



Clear

Edge circumpection
with ROSHO-Cameras



CABLES & ADAPTERS

Always the best connection

Cables & adapters Accessories



Camera cable MiniDIN

2 m	CW-2-020-01
3 m	CW-2-030-05
5 m	CW-2-050-02
10 m	CW-2-100-03
15 m	CW-2-150-02
20 m	CW-2-200-01

MiniDIN Plug pluggable
MiniDIN Socket screwable



Extension cable MiniDIN

2 m	CW-2-020-02
5 m	CW-2-050-06
10 m	CW-2-100-04
15 m	CW-2-150-03
20 m	CW-2-200-03
slotted with corrugated pipe / 10 m	CW-2-100-14
slotted with corrugated pipe / 15 m	CW-2-150-14

MiniDIN Plug screwable
MiniDIN Socket screwable



Schutzkappen MiniDIN

External thread	ZA-6-900-10
Inner thread	ZA-6-900-11

MiniDIN External thread screwable
MiniDIN Inner thread screwable



Quad Control Box M1

ZA-1-002-01

Splitbox for connecting up to four cameras.
Automatic switch-on possible via trigger signals.



On every
vehicle
tailored



16 Cables & adapters

Spiral cable set



Spiral cable set VAR II - 1.5 m

For the connection of one camera

SZ-1-001-04

For connecting two cameras

SZ-1-001-06

Waterproof, three-part cable set for connecting a monitor on the tractor and a camera on the trailer. 3-meters-spiral cable. 1.5-meters-camera-connection cable and a 1.5-meters-monitor-connection cable.



ABS Tractor VAR II - 1.5 m

MW-2-015-05

Connection cable tractor 1.5 m. Plug screwable.



ABS Trailer VAR II - 1.5 m

CW-2-015-04

Connection cable trailer 1.5 m. Socket screwable.



ABS Tractor VAR II - 2 × 1.5 m

MW-2-015-07

Connection cable tractor with 2 × 1.5 m. Plug screwable.



ABS Trailer VAR II - 2 × 1.5 m

CW-2-015-05

Connection cable trailer with 2 × 1.5 m. Socket screwable.



ABS Tractor VAR II - 3 × 1.5 m

MW-2-015-10

Connection cable tractor with 3 × 1.5 m. Plug screwable.



ABS Trailer VAR II - 3 × 1.5 m

CW-2-015-07

Connection cable trailer with 3 × 1.5 m. Socket screwable.



ABS Direct connection VAR II - 1.5 m

1 × 1.5 m	CW-2-015-06
2 × 1.5 m	CW-2-015-08
3 × 1.5 m	CW-2-015-09

1.5-Meters-Direct connection cable for ABS II Series. With this cable you create a robust connection from the trailer to the towing vehicle.



ABS Spiral cable VAR II

Default 3 m	SW-4-030-01
Special length 4.5 m	SW-4-045-01

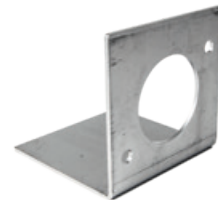
ADR Protected spiral cable in 3 meters and 4.5 meters working length.



ABS Parking socket VAR II

ZA-7-002-07

For safe storage of the spiral cable or the direct connection.



ABS Parking socket holder VAR II

ZA-7-002-06

Holding device for the ABS parking socket VAR II.

**With our
Accessories
you can be sure,
that everything
fits perfectly**



18

Cables & adapters
Manufacturer-specific adapter



The right Adapter

for your JOHN DEERE,
NEW HOLLAND,
FENDT, CLAAS,
MASSEY FERGUSON
and CASE IH-
Vehicle terminal



JOHN DEERE



Adapter JD 6R - 1m

ZA-4-900-17

for connecting a camera to the GS3 CommandCenter Touch and **Generation 4** 4100 and 4600 CommandCenter Touch of the 6R series



Y-Adapter JD 6R - 50 cm

ZA-4-900-21

For connecting up to 2 cameras to the **Generation 4** 4100 and 4600 CommandCenter Touch of the 6R series



Adapter JD 7R / 8R / 9R - 1m

ZA-4-900-28

for connecting a camera to the GS3 CommandCenter Touch and **Generation 4** 4100 and 4600 CommandCenter Touch of the 7R / 8R / 9R series



Adapter JD 7R / 8R / 9R - 15 m

ZA-4-900-15

for connecting a camera to the GS3 CommandCenter Touch and **Generation 4** 4100 and 4600 CommandCenter Touch of the 7R / 8R / 9R series



Adapter JD 2630 - 10 cm

ZA-4-900-08

for connecting up to 3 cameras to the GS3 Terminal 2630



Adapter JD 2630 - 1.5 m

ZA-4-900-09

for connecting up to 3 cameras to the GS3 Terminal 2630



Adapter JD 4640 - 1.5 m

ZA-4-900-37

for connecting up to 3 cameras to the GS3 Terminal 4640

20

Cables & adapters

Manufacturer-specific adapter

NEW HOLLAND



Adapter NH CR/CX new Cab. - 50 cm

ZA-4-900-29

to connect a camera to the New Holland IntelliView Terminal for CR / CX new cabin

NEW HOLLAND

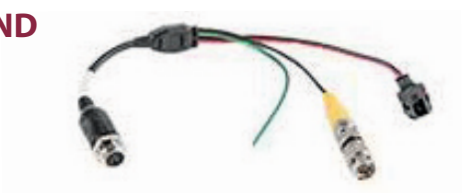


Adapter NH CR/CX old Cab. - 15 cm

ZA-4-900-26

to connect a camera to the New Holland IntelliView Terminal for CR / CX old cabin

NEW HOLLAND CASE STEYR



Adapter SCN - 15 cm

ZA-2-900-02

for connecting a camera to the Steyr terminals, Case and New Holland

TRIMBLE



Adapter Trimble - 2 m

ZA-4-900-18

for connecting a camera to the Trimble parallel drive system

FENDT



Adapter FENDT - 3 m

ZA-4-900-20

for connecting a camera to the FENDT Variotronic 10.4 "and 10.4-B terminal

Cables & adapters Manufacturer-specific adapter

21



22

Cables & adapters
Manufacturer-specific adapter



**MASSEY
FERGUSON**



Adapter MASSEY FERGUSON - 3 m

ZA-2-900-12

for connecting a camera to the MASSEY FERGUSON
Datatronic display

CLAAS



Adapter CLAAS - 15 cm

CW-2-000-01

for connecting a camera to the CLAAS PROFICAM 3 system

CLAAS



Adapter CLAAS - 3 m

CW-2-000-02

for connecting a camera to the CLAAS PROFICAM 4 system

CLAAS



Adapter CLAAS - 1.5 m

CW-2-015-13

for connection to the CLAAS S10 terminal
4 × Mini-DIN



Imprint

ROSHO GmbH – Rose & Holiet
Rotrehre 21
31542 Bad Nenndorf

Phone: +49 (0) 5723 9417 - 0
Fax: +49 (0) 5723 9417 – 50
E-Mail: info@rosho.de

Managing Director: RA Holger Schimmels
Shareholders: Hans Rose, Josef Holiet
Register court: AG Stadthagen
Registration number: HRB 1156

VAT number: DE 812 88 77 95



The information in this catalogue contains only general descriptions or performance characteristics which in case of actual use do not always apply as described or which may change due to further development of the products. This information is merely a technical description of the product. In particular, it does not constitute a guarantee of quality or durability. The desired performance characteristics are only binding if they are expressly agreed upon when the contract is concluded. We reserve the right to deliver, errors and technical changes.

ROSHO GmbH - Rose & Holiet | English | December 2020

Printed in Germany

